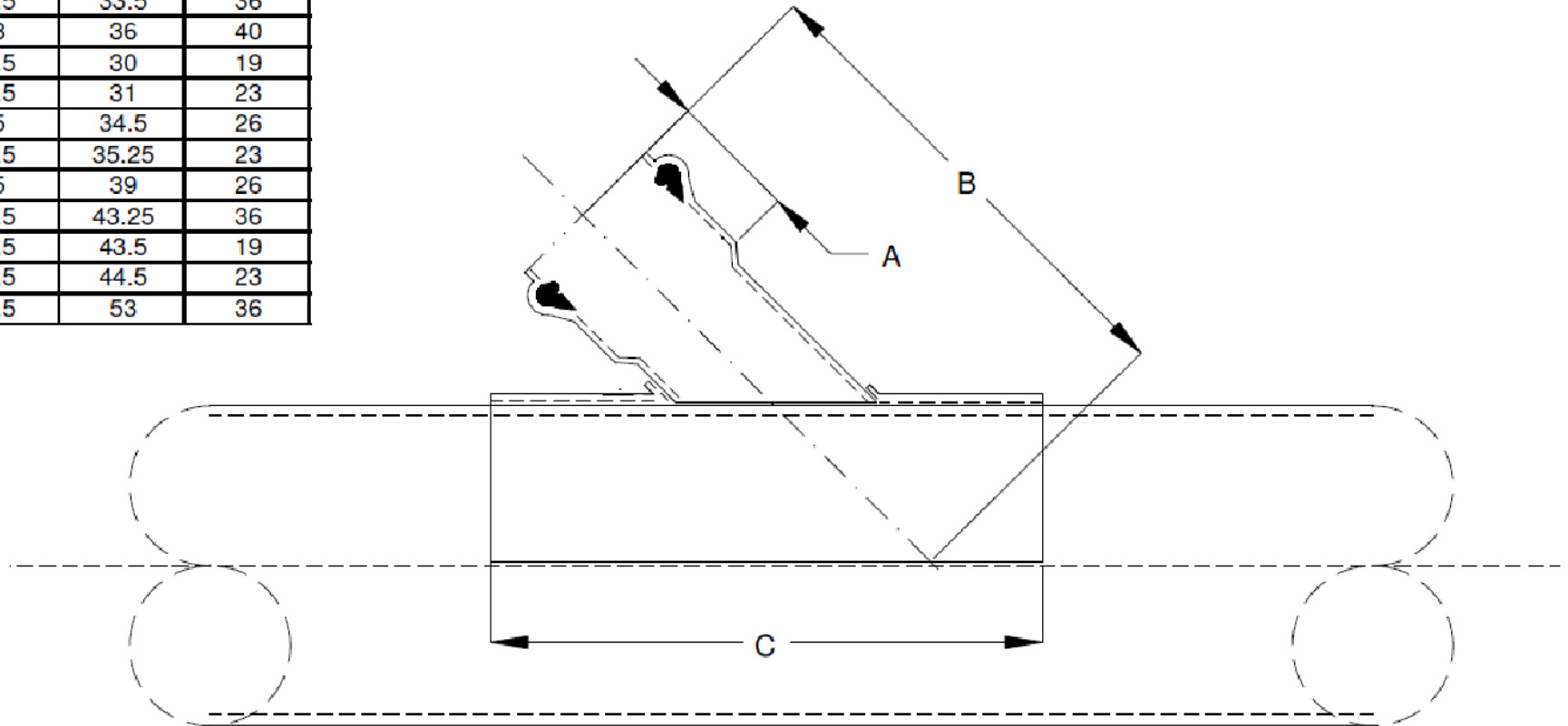


**SIGNED DRAWINGS MUST ACCOMPANY PURCHASE ORDER OR DIMENSIONS OF FITTINGS WILL NOT BE GUARANTEED**

| SIZE  | A   | B     | C  |
|-------|-----|-------|----|
| 24x4  | 3.5 | 25    | 19 |
| 24x6  | 4.5 | 26    | 23 |
| 24x12 | 6.5 | 33.5  | 36 |
| 24x15 | 8   | 36    | 40 |
| 30x4  | 3.5 | 30    | 19 |
| 30x6  | 4.5 | 31    | 23 |
| 30x8  | 5   | 34.5  | 26 |
| 36x6  | 4.5 | 35.25 | 23 |
| 36x8  | 5   | 39    | 26 |
| 36x12 | 6.5 | 43.25 | 36 |
| 48x4  | 3.5 | 43.5  | 19 |
| 48x6  | 4.5 | 44.5  | 23 |
| 48x12 | 6.5 | 53    | 36 |



**DISCLAIMER - PLEASE READ**

- DUE TO VARIOUS FACTORS AFFECTING PRODUCTION, ALL DIMENSIONS ARE APPROXIMATE
- DIMENSIONS AND APPEARANCE ARE SUBJECT TO CHANGE WITHOUT NOTICE DUE TO DESIGN OR PRODUCTION MONIFICATIONS
- ANGLE TOLERANCE FOR ELBOWS IS +/- 2 DEGREES.
- ALL OTHER DIMENSIONS ARE TO TOLERANCES OF +/- 1"
- ALL FITTINGS ARE SUBJECT TO P.T.I. "STANDARD TERMS AND CONDITIONS"

**ROYAL** Building Products

56400 Mound Road, Shelby Township, MI 48316  
Phone (586)781-2700 Fax (586)781-0888

**24" SADDLE WYE  
EXTENDED SOLVENT SKIRTxSDR35 GASKET INLET  
24"x6" SWxG**

PRINTED COPIES ARE FOR REFERENCE ONLY

DATE: 4/22/2014

DRAWN BY: BCS

DATE: 4/22/2014

CHECKED BY: RBP

L2324-6.S

CUSTOMER