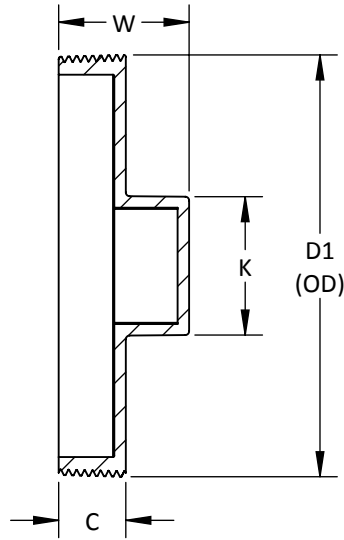


MOLDED



ASTM D2665, F1866, CSA B182.2 WHERE APPLICABLE

**THREADED PLUG - RAISED
PVC DWV**

PART NO.	SIZE IN INCHES	D1	K	W	C
* D1154	4	4 15/32	1 15/16	1 11/16	7/8
* D1156	6	6 19/32	2 3/16	2 1/32	1 1/16
* D1158	8	8 19/32	2	2 3/16	1 1/8
* D11510	10	10 11/16	3	2 5/16	1 11/32
* D11512	12	12 11/16	3	2 15/32	1 17/32

-- DIMENSIONS AND APPEARANCE ARE APPROXIMATE AND SUBJECT TO CHANGE
WITHOUT NOTICE DUE TO DESIGN OR PRODUCTION MODIFICATIONS
-- MOLDED FITTING TOLERANCE = ±1/8" OVERALL LENGTH
-- FABRICATED FITTING TOLERANCE = ±1" LINEAR, ± 2° ANGULAR

* MOLDED FITTING
† ASSEMBLED FROM MOLDED COMPONENTS
ALL OTHER FITTINGS ARE FABRICATED