



131 Regalcrest Court  
Woodbridge, ON L4L 8P3  
Tel: (905) 856-7550  
Fax: (905) 856-4367  
Toll free: 1-800-263-2353

## TECHNICAL SPECIFICATION

### Royal Pipe Systems SDR35 Gasketed Sewer Fittings Controlled Settlement Joint

#### **SCOPE**

This specification covers the requirements for the Royal Controlled Settlement Joint fitting. These fittings are gasketed sewer fittings which are available in trade sizes of 4", 5" and 6". They are manufactured to meet the requirements for controlled settlement joints in CSA B182.1.

These fittings are slip joints, designed to accommodate movement due to ground settlement in a pipe/fitting "riser" connection. The fittings include a spigot end for insertion into the sewer main tee and a two gasket system to accommodate the movement.

#### **MATERIALS**

The fittings are fabricated from CSA certified SDR35 sewer pipe.

#### **GASKETS**

These fittings utilize Double-Seal Locked-In gaskets manufactured from SBR material. The joints for this fitting comply with Clause 7.2 of ASTM D3212.

#### **SETTLEMENT REQUIREMENTS**

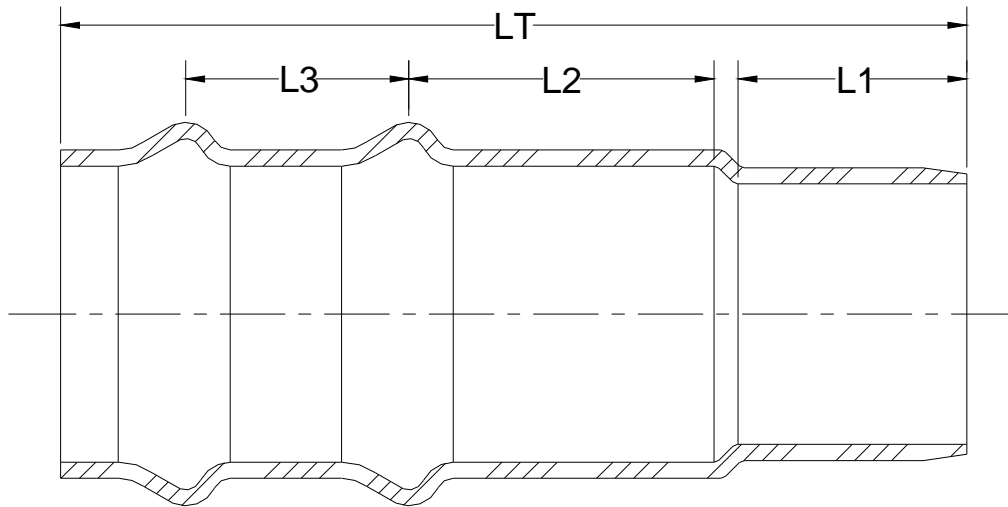
CSA B182.1 requires that the force required to initiate movement shall be a minimum of 2,225 N and the force required to produce a 125mm movement in the joint shall be a maximum of 8,900 N.

#### **TEST REQUIREMENTS**

Quality testing is as per Royal's Quality Control program and in accordance with CSA B182.1.

## **FITTING DIMENSIONS**

<b>Part No.</b>	<b>Nominal Size in (mm)</b>	<b>LT (in)</b>	<b>L1 (in)</b>	<b>L2 (in)</b>	<b>L3 (in)</b>
38AMSJ04	4 (100)	19.00	6.75	6.25	3.00
38AMSJ05	5 (125)	19.00	6.75	6.00	3.50
38AMSJ06	6 (150)	19.00	6.75	6.00	4.00



## **INSTALLATION GUIDELINES**

1. A controlled settlement joint fitting shall be inserted into the sewer main/service tee only.
2. Riser pipe and fittings shall be embedded as specified by the design engineer
3. Only long sweep bends shall be used from the top of the riser to the lateral.
4. No more than one joint between the controlled settlement joint fitting and the long sweep bend is recommended.