



PLUMBING

GVS-65 & GVS-90

Gas Vent Pipe & Fittings Solutions

Rated for flue gas temperatures up to and including 65°C and 90°C

Westlake
Pipe & Fittings

GVS-65 & GVS-90 Gas Vent Pipe & Fittings Solutions

Rated for flue gas temperatures up to and including 65°C and 90°C

Changing The Standard

In 2007, CSA B149.1 Natural Gas and Propane Installation Code was amended requiring that all non-metallic venting systems be certified to ULC S636.

Two Certified Systems are now available

We have developed two certified flue gas venting systems. Our GVS-65 and GVS-90 certified systems come complete with pipe, fittings, primer and solvent cements meeting all of the strict demands of the ULC S636 gas appliance venting standard. These gas venting systems are made with two distinct materials and have two different temperature ratings. They are approved as Type BH Class II A venting systems for gas fired appliances. These two systems continue to have the highest quality and reliability that products we offer.



Manufacturing

Our line of pipe and fittings are manufactured and designed and are tested to meet all necessary industry standards.

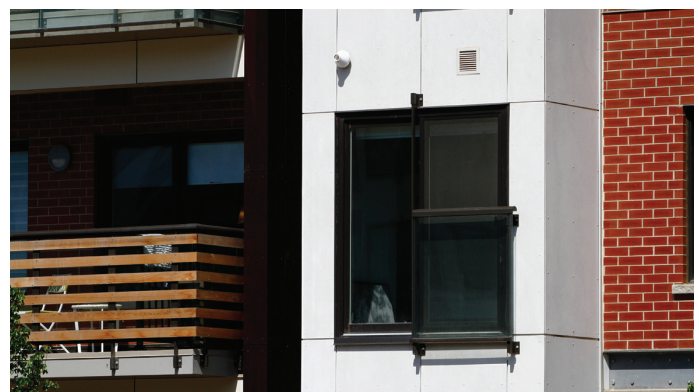
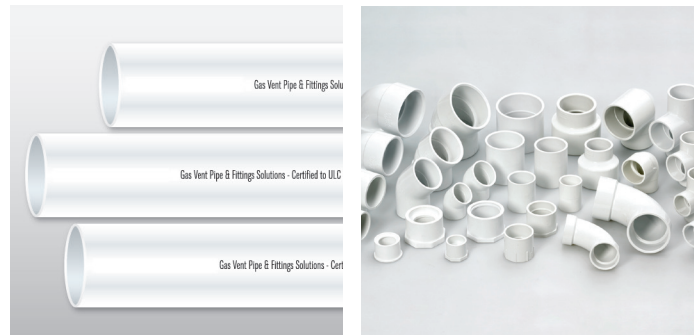
Certifications

Westlake Pipe & Fittings' entire GVS-65 and GVS-90 gas appliance venting solutions is third party certified to ULC S636.



GVS-65 GAS VENTING SOLUTION

Our GVS-65 gas venting system is classified as a Type BH Class II A venting system and is appropriate for use on appliances with flue gas temperatures up to and including 65°C. GVS-65 pipe and fittings are white in color. Both pipe and fittings are made to Schedule 40 pipe dimensions. GVS-65 pipe is available in sizes of 1½", 2", 2½", 3", and 4" with a complete range of fittings and accessories.



GVS-90 GAS VENTING SOLUTION

Our GVS-90 gas venting system is classified as a Type BH Class II B vent and is appropriate for use on appliances with flue gas temperatures up to and including 90°C. GVS-90 pipe and fittings are grey in color. The pipe is made to Schedule 40 pipe dimensions and the fittings are made to Schedule 80 dimensions. GVS-90 pipe is available in sizes from 1½", 2", 2½", 3", 4" 6" and 8" with a complete range of fittings and accessories.



GVS-65 & GVS-90 Third Party Certified to ULC S636

Warnings

Our GVS-65 and GVS-90 pipe is labeled with orange warning labels. According to ULC S636, the labels are mandatory in order to visibly differentiate between a certified gas venting system and an ordinary non-certified plumbing system.



Two Vent Termination Kits

We offer two different vent termination kits, a GVS-65 Concentric Vent Termination Kit and a GVS-65 Side Wall vent Termination Kit. Both our GVS-65 Termination Kits are certified to ULC S636, for use with the GVS-65 Gas Venting Solutions. The GVS-65 termination kits are to be used with our Class IIA (PVC) gas venting system for horizontal or vertical vent terminations. These kits are available for 2" and 3" vent terminations.



Solvent Cements and Primer

GVS-65 and GVS-90 solvent cements are certified as part of each gas venting application. PVC/CPVC/ABS transition cement is required when transitioning between PVC/CPVC and ABS materials.



Before you START!

Prior to installation, please review and follow our installation manual for proper instructions. Do not substitute any pipe, fittings, solvent cements or primer from any other plastic vent manufacturer. Substituting components from different manufacturers voids our system certification.

Proper joint construction is essential for safe installation and operation. The joint construction procedure included in these instructions shall be followed exactly as written for assembly of GVS-65 or GVS-90. Check for proper joint construction when joining pipe to fittings.



This venting system must be free to expand and contract and must be supported in accordance with these instructions. Check for unrestricted vent movement through walls, ceilings and roof penetrations. Installation shall comply with the latest edition of CAN/CSA-B149.1 including supplements, the gas appliance manufacturer's installation instructions and local building codes, and shall be undertaken by qualified personnel. When re-fitting existing water heaters, furnaces or boilers, do not connect either GVS-65 or GVS-90 certified gas vent solutions to existing, non-certified appliance connectors. The entire gas vent solution must be replaced with the appropriate products.

LEARN ABOUT OUR COMMITMENT TO PRODUCT INNOVATION AT WESTLAKEPIPE.COM.

