



D2241 Certa-Lok® Fittings

NAPCO produces Expansion Couplings, Tapped Couplings, Adapters, and Sweeps directly compatible with our D2241 Certa-Lok pipe products.

For additional appurtenance needs, consult the full Yelomine Brochure. Additionally, our D2241 Certa-Lok pipe products can be mated to compatible Iron Pipe Size (IPS) third-party fittings.

Notes:

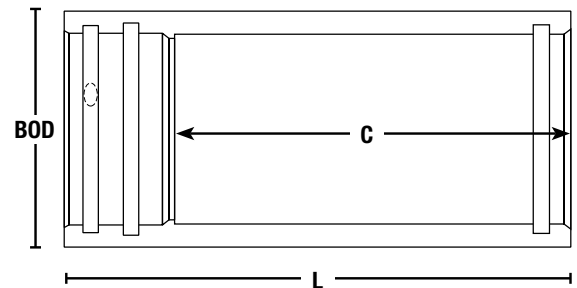
1. These dimensions are for estimating purposes only. All dimensions are in inches unless otherwise specified.
2. ASTM Pressure Rating @ 73°F and includes 2:1 safety factor.
3. Expansion couplings do not provide a fully restrained joint.
4. Non-permanent gaskets are typically used in temporary bypass applications that require disassembly and reuse of the joint. They should never be specified for permanent, buried, or submerged applications. Permanent gaskets are slightly larger and make disassembly of the joint more difficult. They are intended for all installations that do not require disassembly during the system's service life including buried installation, river and road crossings, and all installations that would expose joints to long-term or excessive misalignment due to external loads. If in doubt as to which gasket should be chosen, consult your NAPCO Sales Representative or Technical Services Group.

| Short Form Specification | |
|---------------------------|---|
| Pipe Standard: | AWWA C900 |
| Diameter Std.: | Iron Pipe Size (IPS) |
| Nominal Sizes: | 2", 3", 4", 6", 8", 10", 12", 14", 16" |
| Color: | Yellow |
| Fitting Compound: | ASTM D1784 Cell Class 12454 with Yelomine® Technology |
| Pipe Joint Std.: | Gasketed – ASTM D3139 Solvent Weld – ASTM D2672 |
| Gasket Standard: | ASTM F477 |
| Certifications: | NSF 61 |
| Installation Std.: | AWWA D2774 |

* Certa-Lok Sweeps are made from D2241/RJ pipe that additionally meets NSF 14.



Only products bearing the NSF Mark are Certified



D2241 CERTA-LOK YELOMINE EXPANSION COUPLINGS CERTA-LOK FEMALE X GASKETED SLIP JOINT

| Nom. Size | Pipe Outside Diameter | Pressure Rating (psi) | Certa-Lok Groove Compatibility | | BOD | L | C | Weight (lb) | Part Number | | | |
|-----------|-----------------------|-----------------------|--------------------------------|------------|--------|--------|--------|-------------|---------------|------------------|-------------------|----------|
| | | | D2241/RJ | D2241/RJIB | | | | | Permanent Use | | | Splines |
| | | | | | | | | | Fitting* | Certa-Lok Gasket | Slip Joint Gasket | |
| 2" | 2.375 | 250 | Yes | N/A | 3.200 | 18.000 | 15.075 | 3.2 | 82157716423 | OR020YMPI | GSP2000200 | S0210RNO |
| 3" | 3.500 | 250 | Yes | N/A | 4.380 | 18.000 | 14.075 | 4.9 | 82157716430 | OR030YMPI | GSP2000300 | S0316RNO |
| 4" | 4.500 | 250 | Yes | Yes | 5.470 | 18.000 | 13.575 | 6.8 | 82157010536 | OR040YMPI | GSP2V20400 | S4518RNO |
| 6" | 6.625 | 250 | Yes** | Yes | 7.840 | 18.000 | 13.575 | 12.4 | 82157010537 | OR060YMPI | GSP2V20600 | S0624RNO |
| 8" | 8.625 | 250 | Yes** | Yes | 10.190 | 18.000 | 12.688 | 20.8 | 82157010538 | OR080YMPI | GSP2V20800 | S0832SN1 |
| 10" | 10.750 | 200 | Yes | N/A | 12.438 | 18.000 | 11.325 | 27.7 | 82157010539 | OR100YMPI | GSP2V21000 | S1039SNO |
| 12" | 12.750 | 200 | Yes | N/A | 16.648 | 18.000 | 11.325 | 36.9 | 82157010540 | OR120YMPI | GSP2V21200 | S1246TNO |
| 16" | 16.000 | 90 | Yes | N/A | 17.400 | 18.000 | 11.500 | 33.7 | 8215771653 | OR160YMPI | OR160YMPI | S1656TNO |

* Includes permanent style gaskets and splines

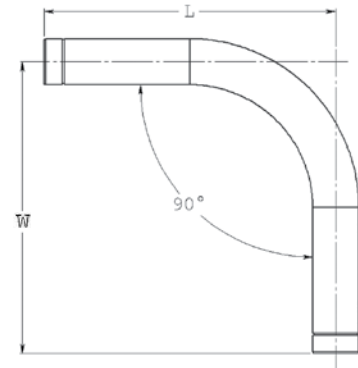
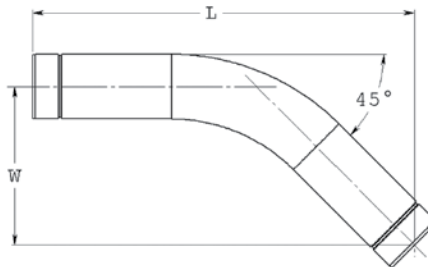
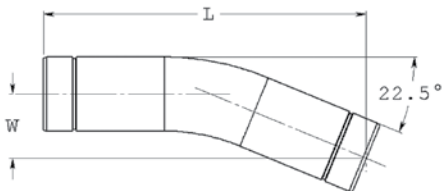
** Not compatible with D2241/RJ DR 12.43 pipe



D2241 Certa-Lok® Fittings

| D2241 CERTA-LOK YELOMINE SWEEPS CERTA-LOK MALE X CERTA-LOK MALE | | | | | | | | | |
|--|-----------------------|--------------------------------|------------|--------|-------------|--------|--------|-------------|-------------|
| Nom. Size | Pressure Rating (psi) | Certa-Lok Groove Compatibility | | OD | Angle (deg) | L | W | Weight (lb) | Part Number |
| | | D2241/RJ | D2241/RJIB | | | | | | |
| 2" | 250 | Yes | N/A | 2.375 | 22.5 | 17.340 | 3.449 | 1.4 | 82157710780 |
| | | | | | 45 | 18.108 | 7.501 | 1.7 | 82157710834 |
| | | | | | 90 | 16.703 | 16.703 | 2.4 | 82157710889 |
| 3" | 250 | Yes | N/A | 3.500 | 22.5 | 26.022 | 5.176 | 4.4 | 82157710797 |
| | | | | | 45 | 25.974 | 10.759 | 4.8 | 82157710841 |
| | | | | | 90 | 23.146 | 23.146 | 6.8 | 82157710896 |
| 4" | 250 | Yes | Yes | 4.500 | 22.5 | 26.048 | 5.181 | 7.9 | 82157710803 |
| | | | | | 45 | 28.727 | 11.899 | 9.6 | 82157710858 |
| | | | | | 90 | 30.273 | 30.273 | 15.8 | 82157710902 |
| 6" | 250 | Yes** | Yes | 6.625 | 22.5 | 28.962 | 5.761 | 17.6 | 82157710810 |
| | | | | | 45 | 39.181 | 16.229 | 26.4 | 82157710865 |
| | | | | | 90 | 42.007 | 42.007 | 44.1 | 82157710919 |
| 8" | 250 | Yes** | Yes | 8.625 | 22.5 | 43.393 | 8.631 | 44.7 | 82157710827 |
| | | | | | 45 | 52.003 | 21.540 | 59.8 | 82157710872 |
| | | | | | 90 | 46.614 | 46.614 | 83.8 | 82157710926 |
| 10" | 200 | Yes | N/A | 10.750 | 22.5 | 69.417 | 13.808 | 63.6 | 82157705236 |
| | | | | | 45 | 72.874 | 30.185 | 74.3 | 82157705250 |
| | | | | | 90 | 71.367 | 71.367 | 114.5 | 82157705267 |
| 12" | 200 | Yes | N/A | 12.750 | 22.5 | 69.427 | 13.810 | 89.5 | 82157705243 |
| | | | | | 45 | 72.947 | 30.216 | 104.5 | 82157705274 |
| | | | | | 90 | 71.796 | 71.796 | 161.0 | 82157705281 |
| 16" | 200 | Yes | N/A | 16.000 | 22.5 | 83.876 | 16.684 | 171.0 | 82157706424 |
| | | | | | 45 | 85.897 | 35.580 | 194.8 | 82157706448 |
| | | | | | 90 | 78.655 | 78.655 | 277.9 | 82157706462 |

** Not compatible with D2241/RJ DR 12.43 pipe

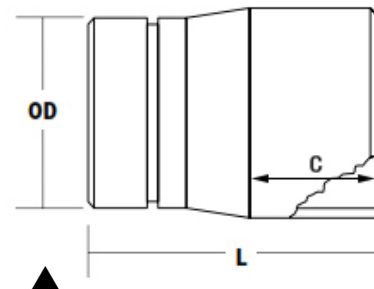
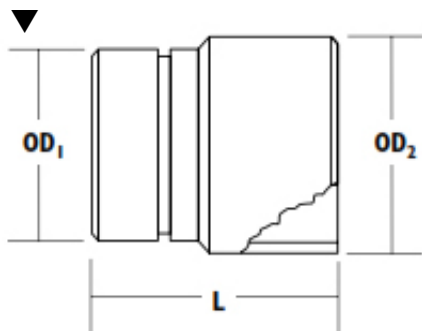




D2241 Certa-Lok® Fittings

| D2241 CERTA-LOK® YELOMINE® SOLVENT WELD CIOD NIPPLE ADAPTER CERTA-LOK® MALE X CIOD SOLVENT WELD MALE | | | | | | | | |
|---|---|---|-----------------------|--------------------------------|------------|--------|-------------|-------------|
| Nom. Size | D2241 CL YM Outside Diameter, OD ₁ | CIOD Pipe Outside Diameter, OD ₂ | Pressure Rating (psi) | Certa-Lok Groove Compatibility | | L | Weight (lb) | Part Number |
| | | | | D2241/RJ | D2241/RJIB | | | |
| 4" | 4.500 | 4.800 | 250 | Yes | Yes | 10.000 | 2.6 | 82157708855 |
| 6" | 6.625 | 6.900 | 250 | Yes** | Yes | 12.000 | 6.3 | 82157708862 |
| 8" | 8.625 | 9.050 | 250 | Yes** | Yes | 13.500 | 12.5 | 82157708879 |
| 10" | 10.750 | 11.100 | 200 | Yes | N/A | 16.000 | 21.5 | 82157707810 |
| 12" | 12.750 | 13.200 | 200 | Yes | N/A | 16.000 | 23.0 | 82157707827 |

** Not compatible with D2241/RJ DR 12.43 pipe



| D2241 CERTA-LOK® YELOMINE® SOLVENT WELD IPS ADAPTERS CERTA-LOK® MALE X IPS SOLVENT WELD FEMALE | | | | | | | | |
|---|-----------------------|-----------------------|--------------------------------|------------|--------|-------|-------------|-------------|
| Nom. Size | Pipe Outside Diameter | Pressure Rating (psi) | Certa-Lok Groove Compatibility | | L | C | Weight (lb) | Part Number |
| | | | D2241/RJ | D2241/RJIB | | | | |
| 2" | 4.500 | 250 | Yes | N/A | 6.625 | 2.750 | 0.5 | 82157705304 |
| 3" | 6.625 | 250 | Yes | N/A | 8.625 | 3.875 | 1.4 | 82157705311 |
| 4" | 4.500 | 250 | Yes | Yes | 9.250 | 4.375 | 2.3 | 82157705328 |
| | | 315 | Yes | Yes | 9.250 | 4.375 | 6.1 | 82157706493 |
| 6" | 6.625 | 250 | Yes** | Yes | 11.375 | 4.500 | 5.3 | 82157705335 |
| | | 315 | Yes** | Yes | 11.375 | 4.500 | 10.7 | 82157706509 |
| 8" | 8.625 | 250 | Yes** | Yes | 12.875 | 4.500 | 9.0 | 82157705342 |
| | | 315 | Yes** | Yes | 12.875 | 4.500 | 18.6 | 82157706516 |
| 10" | 10.750 | 200 | Yes | N/A | 15.250 | 6.000 | 11.0 | 82157705168 |
| 12" | 12.750 | 200 | Yes | N/A | 15.250 | 6.000 | 15.0 | 82157705175 |

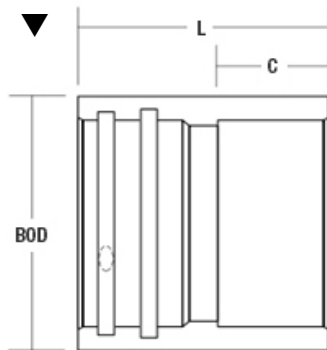
** Not compatible with D2241/RJ DR 12.43 pipe





D2241 Certa-Lok® Fittings

| D2241 CERTA-LOK® YELOMINE® SOLVENT WELD IPS ADAPTERS CERTA-LOK® FEMALE X IPS SOLVENT WELD FEMALE | | | | | | | | | | | | | |
|---|-----------------------|-----------------------|--------------------------------|------------|--------|--------|-------|-------------|---------------|-----------|-------------------|-----------|----------|
| Nom. Size | Pipe Outside Diameter | Pressure Rating (psi) | Certa-Lok Groove Compatibility | | BOD | L | C | Weight (lb) | Part Number | | | | |
| | | | D2241 RJ | D2241 RJIB | | | | | Permanent Use | | Non-Permanent Use | | Spline |
| | | | | | | | | | Fitting* | Gasket | Fitting* | Gasket | |
| 2" | 2.375 | 250 | Yes | N/A | 3.200 | 5.500 | 2.475 | 1.0 | 82157715358 | OR020YMPI | 82157705359 | OR020YMNN | S0210RNO |
| 3" | 3.500 | 250 | Yes | N/A | 4.380 | 8.000 | 3.600 | 2.3 | 82157715365 | OR030YMPI | 82157705366 | OR030YMNN | S0316RNO |
| 4" | 4.500 | 250 | Yes | Yes | 5.470 | 9.000 | 4.100 | 3.6 | 82157715372 | OR040YMPI | 82157705373 | OR040YMNN | S4518RNO |
| | | 350 | Yes | Yes | 5.964 | 9.000 | 4.100 | 5.6 | 82157010557 | OR040YMPI | - | - | S0418SNO |
| 6" | 6.625 | 250 | Yes** | Yes | 7.840 | 9.000 | 4.100 | 6.4 | 82157715389 | OR060YMPI | 82157705380 | OR060YMNN | S0624RNO |
| | | 315 | Yes** | Yes | 8.366 | 11.250 | 6.100 | 11.9 | 82157010558 | OR060YMPI | - | - | S0624RNO |
| | | 350 | Yes‡ | No | 9.050 | 11.000 | 6.100 | 16.9 | 82157010559 | OR060YMPI | - | - | S0624TNO |
| 8" | 8.625 | 250 | Yes** | Yes | 10.190 | 10.125 | 4.600 | 12.0 | 82157715396 | OR080YMPI | 82157705397 | OR080YMNI | S0832SN1 |
| | | 315 | Yes** | Yes | 10.947 | 11.750 | 6.100 | 21.5 | 82157010560 | OR080YMPI | - | - | S0832SN1 |
| | | 350 | Yes‡ | No | 10.947 | 11.750 | 6.100 | 21.6 | 82157010561 | OR080YMPI | - | - | S0832TN2 |
| 10" | 10.750 | 200 | Yes | N/A | 12.438 | 12.125 | 5.850 | 19.3 | 82157715082 | OR100YMPI | 82157705083 | OR100YMNI | S1039SNO |
| 12" | 12.750 | 200 | Yes | N/A | 14.648 | 12.125 | 5.850 | 25.5 | 82157715099 | OR120YMPI | 82157705090 | OR120YMNI | S1246TNO |
| 16" | 16.000 | 90 | Yes | N/A | 17.400 | 12.125 | 5.850 | 23.0 | 82157715136 | OR160YMPI | 82157705212 | OR160YMNI | S1656TNO |



* Includes permanent or non-permanent style gasket as applicable and spline

** Not compatible with D2241/RJ DR 12.43 pipe

‡ Only compatible with D2241 Certa-Lok DR 12.43 pipe





D2241 Certa-Lok® Fittings

| D2241 CERTA-LOK® YELOMINE® TAPPED COUPLINGS CERTA-LOK® FEMALE X CERTA-LOK® FEMALE X NPT TAPPED HOLE | | | | | | | | | | | |
|--|-----------------------|------------------|-----------------------|--------------------------------|------------|--------|--------|-------------|-------------------|-----------|----------|
| Nom. Size | Pipe Outside Diameter | Tapped Hole Size | Pressure Rating (psi) | Certa-Lok Groove Compatibility | | BOD | L | Weight (lb) | Part Number | | |
| | | | | D2241 RJ | D2241 RJIB | | | | Non-Permanent Use | | Spline |
| | | | | | | | | | Fitting* | Gasket | |
| 2" | 2.375 | 3/4" NPT | 200 | Yes | N/A | 3.200 | 7.000 | 1.3 | 82157705403 | OR020YMNN | S021ORNO |
| | | 1" NPT | 200 | Yes | N/A | 3.200 | 7.000 | 1.3 | 82157705441 | | |
| 3" | 3.500 | 3/4" NPT | 200 | Yes | N/A | 4.380 | 9.500 | 2.7 | 82157705410 | OR030YMNN | S0316RNO |
| | | 1" NPT | 200 | Yes | N/A | 4.380 | 9.500 | 2.7 | 82157705458 | | |
| | | 1-1/2" NPT | 160 | Yes | N/A | 4.380 | 9.500 | 2.7 | 82157705465 | | |
| 4" | 4.500 | 1/2" NPT | 200 | Yes | Yes | 5.470 | 10.500 | 4.2 | 82157716560 | OR040YMNN | S4518RNO |
| | | 3/4" NPT | 200 | Yes | Yes | 5.470 | 10.500 | 4.2 | 82157705427 | | |
| | | 1" NPT | 200 | Yes | Yes | 5.470 | 10.500 | 4.2 | 82157705472 | | |
| | | 1-1/2" NPT | 200 | Yes | Yes | 5.470 | 10.500 | 4.1 | 82157705489 | | |
| | | 1-1/2" NPT | 250 | Yes | Yes | 5.964 | 10.500 | 6.5 | 82157706585 | | |
| 6" | 6.625 | 3/4" NPT | 200 | Yes** | Yes | 7.840 | 11.250 | 8.1 | 82157705434 | OR060YMNN | S0624RNO |
| | | 1" NPT | 200 | Yes** | Yes | 7.840 | 11.250 | 8.1 | 82157705496 | | |
| | | 1-1/2" NPT | 200 | Yes** | Yes | 7.840 | 11.250 | 8.1 | 82157705502 | | |
| | | 1-1/2" NPT | 250 | Yes** | Yes | 8.366 | 11.250 | 11.9 | 82157706592 | | |
| | | 2" NPT | 160 | Yes** | Yes | 7.840 | 11.250 | 8.0 | 82157705540 | | |
| 8" | 8.625 | 1" NPT | 200 | Yes** | Yes | 10.190 | 12.500 | 15.1 | 82157705519 | OR080YMNI | S0832SN1 |
| | | 1-1/2" NPT | 200 | Yes** | Yes | 10.190 | 12.500 | 15.0 | 82157705526 | | |
| | | 1-1/2" NPT | 250 | Yes** | Yes | 10.947 | 12.500 | 22.9 | 82157715778 | | |
| | | 2" NPT | 160 | Yes** | Yes | 10.190 | 12.500 | 15.0 | 82157705533 | | |
| | | 3" NPT | 130 | Yes** | Yes | 10.190 | 13.500 | 16.1 | 82157705588 | | |
| 10" | 10.750 | 1-1/2" NPT | 200 | Yes | N/A | 12.438 | 15.000 | 23.8 | 82157707858 | OR100YMNI | S1039SNO |
| 12" | 12.750 | 2" NPT | 160 | Yes | N/A | 14.648 | 15.000 | 31.8 | 82157707803 | OR120YMNI | S1246TNO |

* Includes non-permanent style gasket and spline
 ** Not compatible with D2241/RJ DR 12.43 pipe

