



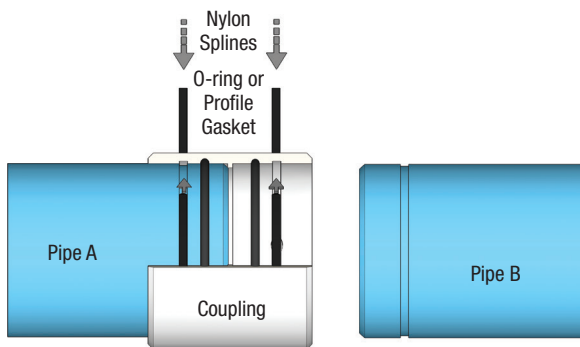
## C900/RJ Certa-Lok® PVC Pressure Pipe | Restrained Joint

NAPCO's C900/RJ Certa-Lok PVC Pressure Pipe is manufactured to meet the standards of today's municipal needs for water and wastewater pressure applications. This unique coupled, restrained-joint system is jobsite proven for decades and designed for trenchless applications with robust tensile strength for pulling multiple segments underground. The low profile coupling allows for quick and easy assembly without interrupting the pulling process and provides greater deflection at the joint for leak-free results. The system assembles in minutes and eliminates costly time consuming fusion.

A segmented PVC pipe solution, this product reduces the jobsite footprint and minimizes community disruption with reduced need for jobsite staging area and traffic control. This coupled pipe system is offered in sizes 4" through 24" with two gaskets per coupling for a leak-free joint and greater deflection capability. Gaskets are available in styrene-butadiene rubber (SBR) as a standard as well as acrylonitrile butadiene rubber (NBR) depending on your soil and site conditions.

### INSTALLATION METHODS

- Horizontal directional drilling (HDD)
- Static pipe-bursting
- Open-cut
- Carrier pipe through casings



Applications	Potable Water	Wastewater	Reclaimed Water
<b>Pipe Color:</b>	Blue	Green	Purple
<b>Coupling Color</b> 4" – 12": 4" – 24":	White Tan	White Tan	White Tan
<b>Certifications:*</b>	NSF 61 NSF 14 UL 1285	None	None

\*See Certification Letter for full explanation and list of exceptions.

Short Form Specification	
<b>Pipe Standard:</b>	C900
<b>Diameter Std.:</b>	Cast Iron Outside Diameter (CIOD)
<b>Nominal Sizes:</b>	4", 6", 8", 10", 12", 14", 16", 18", 20", 24"
<b>Dimension Ratios &amp; Pressure Ratings:</b>	DR 25 – 165 psi DR 21 – 200 psi DR 18 – 235 psi DR 14 – 305 psi
<b>Standard Lay Length:**</b>	20', 40'
<b>Pipe Compound:</b>	ASTM D1784 Cell Class 12454
<b>Coupling Material:</b>	4"–12": ASTM D1784 Cell Class 12454 14"–24": Fiberglass Composite
<b>Pipe Joint Std.:</b>	ASTM D3139
<b>Max. Angular Joint Deflection:‡</b>	0.5° per side of coupling 1° total per joint
<b>Gasket Standard:</b>	ASTM F477, UL 157
<b>Gasket Material Offering:</b>	Standard – IR/SBR Optional – NBR
<b>Installation Std.:</b>	AWWA C605

\*\*Only 20' lengths are hydrotested.

‡See Installation Guide for more information.



Only products bearing the NSF Mark are Certified





## C900/RJ Certa-Lok PVC Pressure Pipe | Restrained Joint

C900/RJ CERTA-LOK PIPE & COUPLING DIMENSIONS												
Nom. Size	Outside Diameter (OD)	DR	Pipe							Coupling		
			Min. Wall Thickness (T)	Internal Diameter (ID)	X	W	D	P	Weight (lb/ft)	BOD	L	Weight (lb/ft)
4"	4.800	18	0.267	4.266	3.000	0.375	0.135	0.302	2.5	5.964	8.250	4.0
		14	0.343	4.114					3.1			
6"	6.900	18	0.383	6.134	3.000	0.500	0.135	0.302	5.1	8.366	8.250	7.1
		14	0.493	5.914					6.4			
8"	9.050	18	0.503	8.044	3.163	0.500	0.145	0.634	8.7	10.947	10.500	15.5
		14	0.646	7.758					11.0			
10"	11.100	18	0.617	9.866	3.625	0.750	0.215	0.634	13.2	13.361	11.125	23.9
		14	0.793	9.514					16.6			
12"	13.200	18	0.733	11.734	3.625	0.750	0.215	0.634	18.6	15.836	12.000	36.1
		14	0.943	11.314					23.5			
14"	15.300	25	0.612	14.076	3.610	0.750	0.215	0.634	18.3	16.400	12.000	26.9
		21	0.729	13.842					21.7			
		18	0.850	13.600					25.0			
16"	17.400	25	0.696	16.008	3.673	0.875	0.265	0.634	23.7	18.875	12.000	39.8
		21	0.829	15.742					28.0			
		18	0.967	15.466					32.4			
		14	1.243	14.914					40.9			
18"	19.500	25	0.780	17.940	4.035	1.100	0.300	0.750	29.8	20.870	15.000	47.0
		21	0.929	17.642					35.1			
		18	1.083	17.334					40.6			
20"	21.600	25	0.864	19.872	4.035	1.100	0.300	0.750	36.5	23.120	15.000	55.7
		21	1.029	19.542					43.1			
		18	1.200	19.200					49.8			
24"	25.800	25	1.032	23.736	4.035	1.100	0.300	0.750	52.1	27.620	15.000	81.3
		21	1.224	23.342					61.5			
		18	1.433	22.934					71.1			

**Notes:**

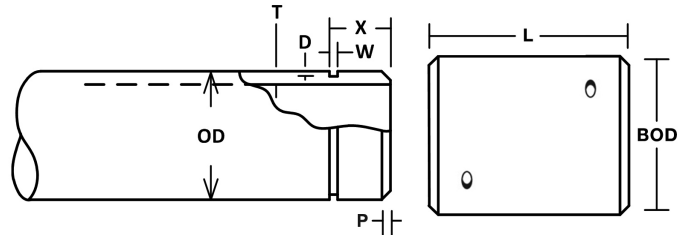
1. These dimensions are for estimating purposes only. All dimensions are in inches unless otherwise specified.
2. DR = Dimension Ratio
3. AWWA Pressure Class @ 73°F and includes 2:1 safety factor.
4. Maximum Pull Force based on actual testing and includes 2:1 safety factor.
5. Internal diameter calculated using nominal outside diameter and minimum wall thickness.



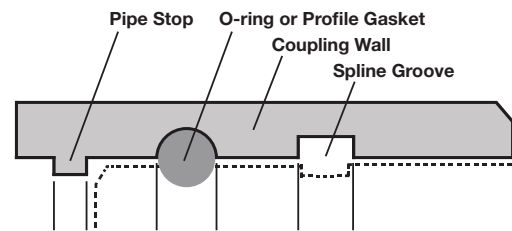


## C900/RJ Certa-Lok PVC Pressure Pipe | Restrained Joint

JOINT PERFORMANCE DATA				
Nom. Size	DR	Pressure Class (psi)	Min. Bend Radius (ft)	Max. Pull Force (lb/ft)
4"	18	235	100	7,800
	14	305		9,800
6"	18	235	144	16,000
	14	305		18,900
8"	18	235	188	23,100
	14	305		24,300
10"	18	235	232	40,500
	14	305		48,700
12"	18	235	275	50,500
	14	305		53,800
14"	25	165	319	52,500
	21	200		57,000
	18	235		61,500
16"	25	165	363	68,500
	21	200		68,500
	18	235		68,500
	14	305		68,500
18"	25	165	406	97,000
	21	200		105,000
	18	235		113,000
20"	25	165	450	107,500
	21	200		112,500
	18	235		117,500
24"	25	165	538	120,000
	21	200		132,500
	18	235		145,000



**C900/RJ COUPLING DETAIL:**





# MUNICIPAL PRODUCT SPECIFICATION

## C900/RJ Certa-Lok PVC Pressure Pipe | Restrained Joint

C900/RJ CERTA-LOK ACCESSORIES												
Application	Nom. Size	Couplings			Splines				Gaskets			
		Material	Max. Pressure (psi)	Part Number*	Material	Size	Length	Part Number	Material	Shape	Size	Part Number
Standard	4"	PVC	305	82157292743	Nylon	0.250x0.250	18	S0418SN0	IR/SBR	Round	0.313	OR040RJ0I
	6"	PVC	305	82157292309	Nylon	0.250x0.375	24	S0624TN0	IR/SBR	Round	0.313	OR060RJ0I
	8"	PVC	305	82157292330	Nylon	0.250x0.375	32	S0832TN0	IR/SBR	Round	0.400	OR080RJ0I
	10"	PVC	305	82157292316	Nylon	0.375x0.625	39	S1039TN0	IR/SBR	Round	0.438	OR100RJ0I
	12"	PVC	305	82157292323	Nylon	0.375x0.625	46	S1246TN0	IR/SBR	Round	0.438	OR120RJ0I
	14"	Fiberglass Composite	235	82157741296	Nylon	0.375x0.625	51	S1451TN0	IR/SBR	Round	0.438	OR140RJ0I
	16"	Fiberglass Composite	235	82157741272	Nylon	0.375x0.625	56	S1656TN0	IR/SBR	Round	0.407	OR160RJ0I
	18"	Fiberglass Composite	235	82157741333	Nylon	0.563x0.975	68	S1868TN0	IR/SBR	Profile	0.825 x 0.566	GSPR001800
	20"	Fiberglass Composite	235	82157716312	Nylon	0.563x0.975	75	S2075TN0	IR/SBR	Profile	0.825 x 0.566	GSPR002000
	24"	Fiberglass Composite	235	82157741340	Nylon	0.563x0.975	88	S2488TN0	IR/SBR	Profile	0.825 x 0.566	GSPR002400
Oil-Resistant	4"	PVC	305	82157292331	Nylon	0.250x0.250	18	S0418SN0	NBR	Round	0.313	OR040RION
	6"	PVC	305	82157292332	Nylon	0.250x0.375	24	S0624TN0	NBR	Round	0.313	OR060RION
	8"	PVC	305	82157292333	Nylon	0.250x0.375	32	S0832TN0	NBR	Round	0.400	OR080RION
	10"	PVC	305	82157292334	Nylon	0.375x0.625	39	S1039TN0	NBR	Round	0.438	OR100RION
	12"	PVC	305	82157292335	Nylon	0.375x0.625	46	S1246TN0	NBR	Round	0.438	OR120RION

\* = Includes coupling, 2 gaskets, and 2 splines

