

ELECTRICAL

NAPBLOC™

A New, Innovative Solution for Electrical Duct Spacers

Westlake
Pipe & Fittings

NAPBLOC™

Westlake Pipe & Fittings is Leading the Way – A New, Innovative Solution for Electrical Duct Spacers

NAPBLOC offers a new approach to duct spacers. The next generation modular design enables you to add as much width as the job requires.

- Just click individual ways together to create a wider platform, no overlapping of spacers are required to go wide.
- Stock single-way modules to always have the right combination of pieces needed on the job, or stock larger arrangements to save time on the jobsite. Spacers in 4" x 3" and 4" x 1½" available in 1, 2, 3, or 4-way.
- NAPBLOC spacers remain stable when used as a base, no need to use a separate spacer for the bottom row.
- The option for field assembly provides the potential to reduce stocking SKUs and inventory space, one carton of the next generation of spacers can provide endless ways.

The 4" x 3" spacer is designed to provide the 190mm centre to centre (vertical and horizontal) duct spacing referenced by the Canadian Electrical Code (CEC). The 4" x 1½" spacer is designed to provide 150mm centre to centre (vertical and horizontal) duct spacing.

The new modular design includes the following features:

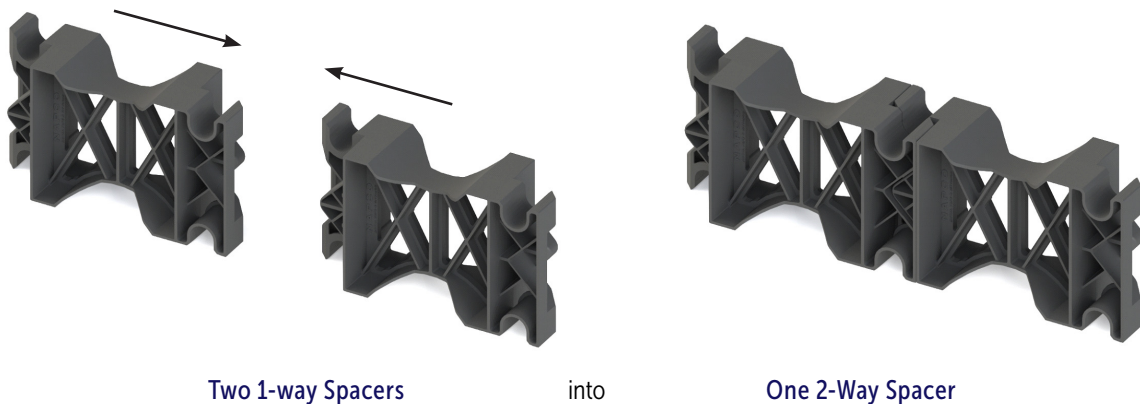
- Snap together design allows for endless ways of spacers
- Solid locking mechanism for easy field assembly of the final spacer configuration
- Can be used as a base or intermediate spacer
- Rebar channels of 0.875" width molded at top and bottom of both sides of each piece, ensuring that rebar can be accommodated in the design and installation for any assembled combination
- Molded from tough, corrosion-resistant polypropylene material, to provide support for multiple layers of duct during installation
- Can be ordered pre-assembled with up to 4 way



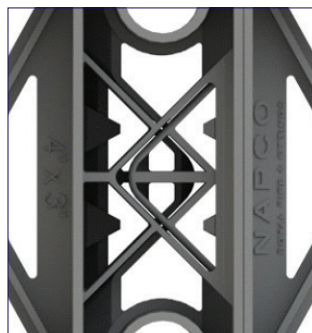
AVAILABLE CONFIGURATIONS		
Description	Product Code	Length (inches)
3½" x 1" x 1" x 2" – 2 Way Single Piece NAPBLOC Duct Spacer	DMB351122	12.5
3½" x 1" x 1" x 2" – 3 Way Single Piece NAPBLOC Duct Spacer	DMB351123	16.9
3½" x 1" x 1" x 2" – 4 Way Single Piece NAPBLOC Duct Spacer	DMB351124	21.5
4" x 1½" x 1½" x 3" – 1 Way Modular NAPBLOC Duct Spacer	DMB4151531NG	7.8
4" x 1½" x 1½" x 3" – 2 Way Modular NAPBLOC Duct Spacer	DMB4151532NG	13.7
4" x 1½" x 1½" x 3" – 3 Way Modular NAPBLOC Duct Spacer	DMB4151533NG	19.7
4" x 1½" x 1½" x 3" – 4 Way Modular NAPBLOC Duct Spacer	DMB4151534NG	25.6
4" x 2" x 2" x 3" – 2 Way Single Piece NAPBLOC Duct Spacer	DMB42232	14.3
4" x 2" x 2" x 3" – 3 Way Single Piece NAPBLOC Duct Spacer	DMB42233	20.5
4" x 2" x 2" x 3" – 4 Way Single Piece NAPBLOC Duct Spacer	DMB42234	27.0
4" x 3" x 3" x 3" – 1 Way Modular NAPBLOC Duct Spacer	DMB43331NG	9.4
4" x 3" x 3" x 3" – 2 Way Modular NAPBLOC Duct Spacer	DMB43332NG	16.9
4" x 3" x 3" x 3" – 3 Way Modular NAPBLOC Duct Spacer	DMB43333NG	24.4
4" x 3" x 3" x 3" – 4 Way Modular NAPBLOC Duct Spacer	DMB43334NG	31.9
4½" x 2" x 2" x 3" – 2 Way Single Piece NAPBLOC Duct Spacer	DMB452232	15.5
4½" x 2" x 2" x 3" – 3 Way Single Piece NAPBLOC Duct Spacer	DMB452233	22.2

Modular NAPBLOC

Assembly of single spacers into multiple-way spacers is quick and easy. Just align the locking mechanisms on the ends of the spacers and push them together:



Four snaps secure the blocs together:



For more information on the use of NAPBLOC spacers in duct pipe installation, refer to the Westlake Pipe & Fittings' PVC Duct Pipe & Fittings Brochure. Learn about our commitment to product innovation at westlakepipe.com.

